

1951 BOWMAN BASEBALL CARDS

I was eleven years old in 1951 and in fifth grade at the Raymond Avenue Grade School in Poughkeepsie, New York. Although we were not supposed to leave school grounds during recess, some brave soul discovered 1951 Bowman baseball cards at Reed's Variety Store, across the street from the school. I guess I was a little slower than some of the other kids because I didn't get started collecting until the second or third series was being sold. I quickly became fascinated by the 2 1/16" by 3 1/8" colorful pieces of cardboard that pictured most of the players in the 16 Major League teams of the day. It wasn't easy going back and getting all the cards that I'd missed, but by making trades, and even buying cards from kids, I was able to get the cards I missed, and eventually collect the whole set. I still remember the terrible time I had talking one of my friends out of the Ed "Whitey" Ford and Larry "Yogi" Berra cards, numbers 1 and 2. I collected cards through 1956; then, like most other teenage boys, became more interested in girls, cars, and other more "grown-up" activities.

Fast-forward twenty-nine years. After several years of almost getting back to collecting, I finally took the plunge. My kids were old enough to get interested, so I started buying 1980 Topps wax packs and had a great time completing the set with their help. But what I *really* wanted to do was reconstruct a 1951 Bowman set, since like everyone else, all the cards I collected as a kid had mysteriously disappeared while I was away at college. I bought my first 1951 Bowman, Sam Dente, number 133, from Bob Berry, in December of 1981. I was hooked. I bought the whole 5th series from an ad in SCD in the spring of 1982, and while on vacation in Ocean City, New Jersey, in June, I bought 138 different low-number commons. I could have had the Mantle for about the same price but went for quantity instead of quality. I've had mixed emotions about that decision for a long time.

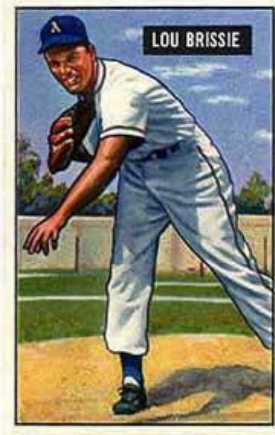


At this point, I decided I needed a want list for the remaining cards in the set. This was before the advent of organized price guides. While creating the want list, I discovered that there was a definite pattern to the set. I knew that the cards were released in 7 series of either 36 or 72 subjects and that the whole set consisted of 324 cards. I noticed that the cards were arranged in order by team, in a repeatable sequence. The teams alternated by league: Yankees, Phillies, Indians, Dodgers, Athletics, Cardinals, White Sox, Giants, Red Sox, Pirates, Senators, Braves, Browns, Cubs, Tigers, and Reds. The Yankees and Phillies were first because they played in the 1950 World Series. This sequence of 16 teams was repeated ten times from card number 1 to card number 324. Series 3, 5, and 6 had one 16-team sequence; series 4 and 7 had two sequences. Series 1 and 2 had three sequences between them: cards 1 through 24, 25 through 48, and 49 through 72. Teams were represented by either, one, two, or three cards in a row, with the Yankees always leading off and the Reds in last place.

It was then I became as interested in what it said on the card backs as I was in the pictures on the card fronts. Some players were pictured in the uniform of one team and listed on the back as playing for a different team. Since I wanted the correct team for each player to appear on my want list, I needed to find out what was going on here. For example, card number 155, Lou Brissie, is shown in an Athletics uniform, but on the back of his card, he is listed as a member of the Indians. The following table looks at three cards from the 4th series.

Player's Name	Card No.	Front Team	Back Team	Notes on Back
Sam Zoldak	114	Indians	A's	"Traded to A's at press time."
Lou Brissie	155	A's	Indians	"Traded to Cleveland, April 30, 1951..."
Stan Rojek	166	Pirates	Cardinals	"Traded to Cardinals at press time."

1951 BOWMAN BASEBALL CARDS



It looked like some players were traded during the season and the text on the card back was updated while the drawing on the card front remained as it was before the trade. It even appeared that Lou Brissie and Sam Zoldak may have been involved in the same trade. As I acquired more and more cards and studied them in earnest, it became clear that in several instances, the set pattern that I talked about before, was disrupted by players switching teams. If you look at the next table, and you distinguish between card front teams and back teams, you can see more clearly some of the updates that went on during the production and printing of the set. The table shows the relationship among these same three traded players from the 4th series, with their original and revised placement in team sequences.

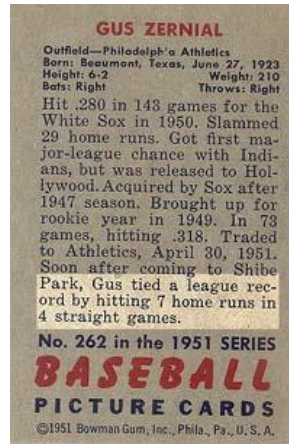


Yankees	Phillies	Indians	Dodgers	Athletics	Cardinals	White Sox	Giants	Red Sox	Pirates	Senators
				114-Zoldak						
109-Reynolds	111-Simmons	114	116-Edwards	119-Joost	121-Staley	123-Judson	125-Rigney	128-Kinder	130-Saffell	132-Michaels
110-Brown	112-Jones	115-Gromek	117-Miksis	120-Coleman	122-Garagiola	124-Nairhos	126-Thomson	129-Batts	131-Chambers	133-Dente
	113-Nicholson		118-Roe				127-Maglie			
145-Sanford	147-Heintzelm	150-Garcia	152-Abrams	154-Suder	156-D. Rice	159-Stewart	161-Westrum	164-Wight	166	168-Mele
146-Hopp	148-Hamner	151-Doby	153-Barney	155	157-Brazle	160-Masi	162-Jansen	165-Williams	167-Dickson	169-Hudson
	149-Church	155-Brissie			158-Diering		163-Kennedy			
					166-Rojek					

As you can see, the Brissie card was **supposed** to fit in with the A's grouping after number 154, Suder. The same kind of thing happened with the other two cards mentioned above: Zoldak and Rojek. While none of this is exactly rocket science, I was having a ball constructing all kinds of lists and even field position diagrams by team.

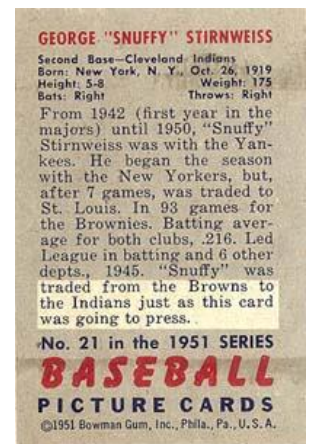
It was during this time that the phrase, "traded at press time" on a few of the cards, began to sink in. Cardbacks were modified "at press time". Here's a set of cards that was modified **during production** to keep traded player's teams current! These days when sets come out in November of the previous year, not even the so-called "traded" or "update" sets do nearly as good a job of keeping track of player movement. I noticed other things, on card backs, that were interesting. There were **actual events** from the 1951 season that were mentioned on the cardbacks. The next table shows what I mean. As would be expected, most of these events were described on 7th series cards.

1951 BOWMAN BASEBALL CARDS



Series	Card No.	Player's Name	Event Mentioned on Card	Probable Date
4th	147	Ken Heintzelman	...a 2-1 victory over the N.Y. Giants	April 25
7th	258	Luke Easter	Kept out of the lineup... first few weeks of the 1951 season	May 27
7th	262	Gus Zernial	Gus tied a league record by hitting 7 HRs in 4 straight games ^[1]	May 17
7th	269	Ray Noble	Now having his first season in the majors	April 18
7th	299	Clyde King	At the end of May, his record was 4-3	May 30
7th	302	Jim Busby	Hitting .359 about a month after the opening of the 1951 season	May 19

It was at this point, that I decided to do something that would occupy my spare time for the next several years. The Stirnweiss card, number 21, triggered it. He's pictured as a member of the St. Louis Browns, but the back of the card says he was traded to the Indians "as this card was going to press". I found out the trade date was April 1, 1951. That meant that the first series of cards was probably produced sometime in April. From this revelation, I decided to try and figure out when each of the seven series of 1951 Bowman baseball cards was printed, based solely on what was mentioned on the back of the cards. This was a pure and simple exercise in logic, based on what was written, or just as importantly, not written, on each of the 324 cards in the set. By this last, I mean if some relatively important event that happened during the 1951 season is *not* referred to on the card, I assumed the card was produced before the event took place. An example of this would be the big trade between the Dodgers and the Cubs on June 15, 1951. None of the players involved have any mention of the trade on their cards.



My first order of business was to find out what was written on the backs of all 324 cards. I probably had 300 different cards by this point; the cards I didn't have were all high numbers, including the Mantle and Mays cards,

1951 BOWMAN BASEBALL CARDS

which to this day I do not have (This was before the 1951 Bowman reprint set or the internet). I corresponded with dealers and had them copy down exactly what it said on the backs of cards and mail the information to me; I copied card backs at shows I attended. I then began to place the cards into different categories based on the kind of information they contained. I separated players, who had been traded during the 1951 season, and it was noted on the card, from players who had been traded and no mention of the trade was made. Likewise, those who were sent to the minors during 1951 - were mentioned and not mentioned. I spent months looking at microfilm of the sports pages of the "New York Times", in my local library and noted all the 1951 player and manager movements I could find.

I spent one entire day in June 1992, sitting in the National Baseball Hall of Fame Library, at Cooperstown, reading 1951 issues of "The Sporting News" and the "National Association Bulletins" for 1951. I got a copy of Joe Reichler's "The Baseball Trade Register" and made sure I knew the details of every trade that occurred in 1951. I even corresponded with players to find out things like when Del Crandall was inducted into the armed services and what exactly happened to Hank Wyse when he "switched" to the Washington Senators. It then became possible to order a subset of each of the seven series of cards, by date. I could determine which cards were printed *before* a given range of dates, and which were produced *after* the same range. This technique is shown in the next table. Boldly printed items are quoted directly from the card backs.

Series	No.	Name	After	Before	Remarks on Card Back
1-36	21	Stirnweiss	01-Apr-51		"To the Indians as this card was going to press".
	8	Lehner		30-Apr-51	Traded from the Athletics to the White Sox
37-72	63	Dillinger	01-Apr-51	16-May-51	Sold by the Pirates to the White Sox
73-108	74	Johnson	01-Apr-51	14-May-51	Traded from the Yankees to the Cardinals
109-180	166	Rojek	17-May-51		"Traded to the St. Louis Cardinals at press time".
	116	Edwards		15-Jun-51	Traded from the Dodgers to the Cubs
181-216	200	Kramer	28-May-51		"Released May 16, 1951, signed by the Yankees May 28".
	190	Hatten		15-Jun-51	Traded from the Dodgers to the Cubs
217-252	229	Howerton	15-Jun-51	21-Jul-51	"Traded to the Pirates by the Cubs, June 15, 1951."
253-324	271	Wright	24-Jun-51		"To Louisville June 1951."
	282	Frisch		21-Jul-51	Dismissed as the manager of the Cubs

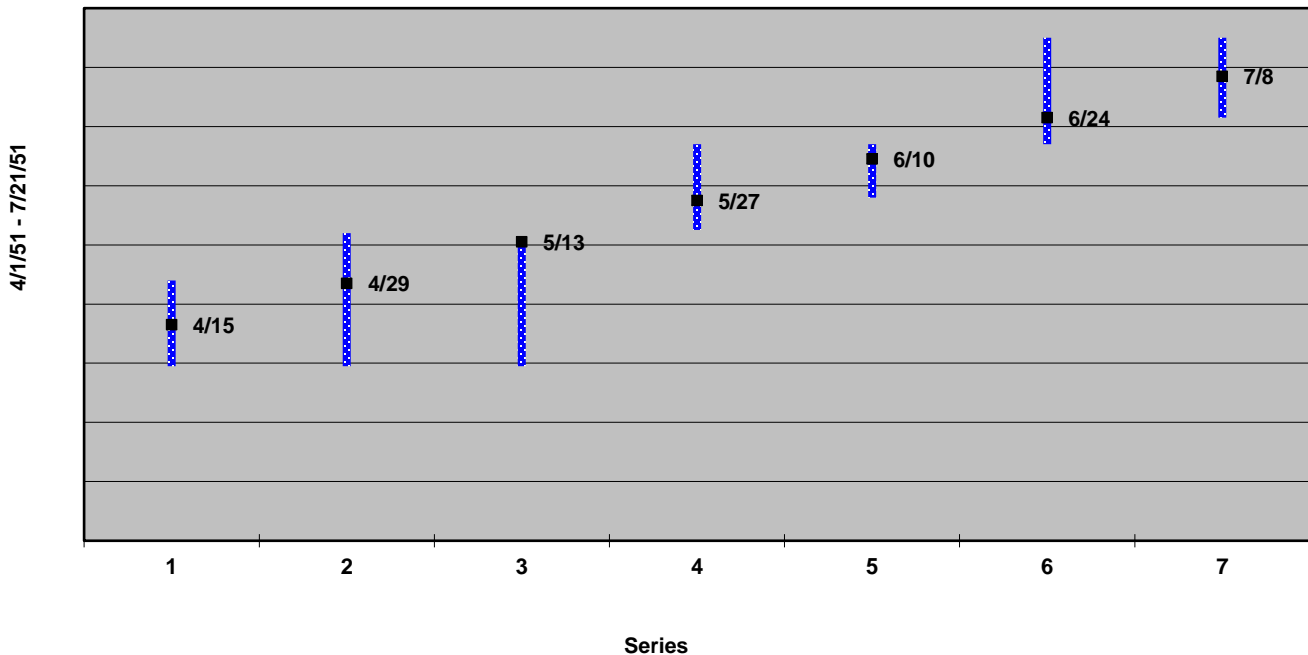
1951 BOWMAN BASEBALL CARDS



I then attempted to figure out when each series was printed based on the knowledge obtained from the table. This is by no means an exact science. As you can see, some series had no events that I could use for an exact prediction. For example, all I know about the first three series is that they were printed *after* April 1st; the 4th and 5th series were printed *before* June 15th. I also used a straight-line method to predict dates. I spaced everything out evenly with no particular insight into the time between series press runs. Even though the 4th and 7th series had 72 cards, I treated them in the same way as all the 36-card series. I used the following high-low-close type chart to show when I thought the cards were produced:



Estimated Series Print Dates



The vertical bars represent the time when a series could have been printed. The bottom of the series 1 bar is April 1, 1951, and the top of the series 7 bar is July 21, 1951. The black squares represent my guess as to when each series was printed. Estimated print dates for each series are:

1951 BOWMAN BASEBALL CARDS

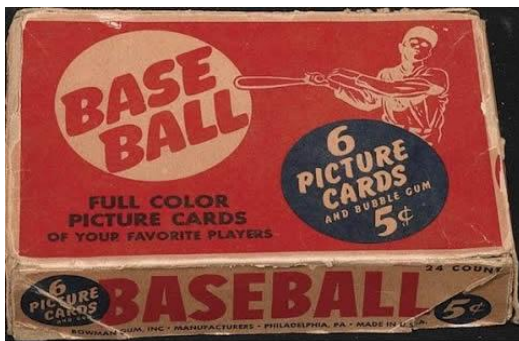
Series	Numbers	After	Before	Date Printed
1	1-36	April 1	April 30	April 15
2	37-72	April 1	May 16	April 29
3	73-108	April 1	May 14	May 13
4	109-180	May 17	Jun 15	May 27
5	181-216	May 28	Jun 15	Jun 10
6	217-252	Jun 15	Jul 21	Jun 24
7	252-324	Jun 24	Jul 21	Jul 8

Well, there you have it! Is it accurate? I don't know. Is it close? Probably. The only information I have, to dispute my calculations, comes from a correspondent of mine who thinks he remembers the 5th series coming out when he was at Boy Scout Camp in *late July*.

I have almost 200 pages of research on the 1951 Bowman baseball card set and the 1951 baseball season: lists, team field diagrams, rosters, letters, pictures, autographs, etc. I have a searchable database containing all 554 [\[2\]](#) players in the majors during 1951, with most of their important batting, pitching, and fielding statistics. I developed a set of templates for all 324 1951 Bowman cards, containing summaries of the information I found by reading the card backs, as well as player career highlights and lowlights. I have team lists showing which players appeared in 1950, '51, and '52 Bowman sets and the 1952 Topps set. I would be extremely interested in corresponding with any readers who share my fascination with the 1951 Bowman baseball card set, and its players. If any reader knows the true printing dates for any or all series of 1951 Bowmans, please send me an e-mail to the Webmaster, below.

^[1] 1952 Topps card number 31 commemorates the same event one game earlier. Gus hit 6 homers in three straight games - thus the six balls attached to his bat.

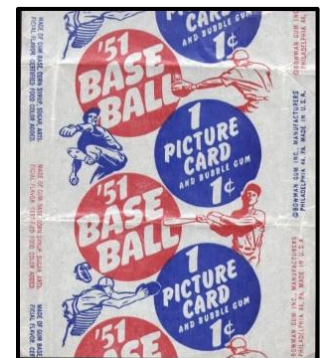
^[2] According to the 1952 issue of The Sporting News "Baseball Register", there were 277 players in each league in 1951.



1951 Bowman Baseball - 5¢ Box



1951 Bowman Baseball – Unopened Pack



1951 Bowman Baseball - 1¢ Wrapper